

LG 1000 - 1500



GB

- Mountings for table/wall
- Total length: 1 and 1.5m
- Direct hose connection to channel
- Suitable for mounting at working machines and on workbenches

D

- Montagebeschlag für Tisch/Wand
- Totallänge: 1 und 1,5m
- Direkter Schlauchanschluß an Kanal
- Geeignet für Montage an Bearbeitungsmaschinen und auf Feilbänken

LG 2000 - 4000



GB

- Mountings for wall
- Total length: 2, 3 and 4m
- Possibility for limited turnable cantilever joint up to 9m (total length)
- Direct hose connection to channel
- Suitable for extraction of welding smoke, light dust and gases

D

- Montagebeschlag für Wand
- Totallänge: 2, 3 und 4m
- Möglichkeit für feste drehbare Verlängerung bis zu 9m (Totallänge)
- Direkter Schlauchanschluß an Kanal
- Geeignet zur Absaugung von Schweißrauch, leichtem Staub und Gasen

Standard- und Sonderausrüstung / Standard and special equipment:



Quick coupling
With extension hose.

Schnellkupplung
Mit Verlängerungsschlauch.



Switch
Spotlight and start/stop-switch available.

Schalter
Licht und Start/stop-Schalter erhältlich.



Soldering hood
Slant cut hood with built-in damper.

Löttrichter
Schräg geschnittener Trichter mit eingebauter Absperrklappe.



Gas springs
Balanced with gas springs.

Gasfedern
Ausbalanciert mit Gasfedern.

Extraction arm Punktabsaugarm

type
Typ

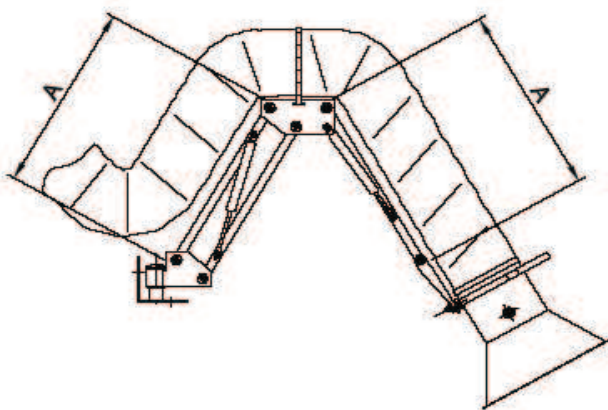
LG

Diameter	Hose type*	Max. vacuum	Damper	See page
ø38-ø50mm	S2B	35000 Pa	No	8.02
ø63-ø200mm	S1	1500 Pa	Yes	8.02

* Special hoses are available

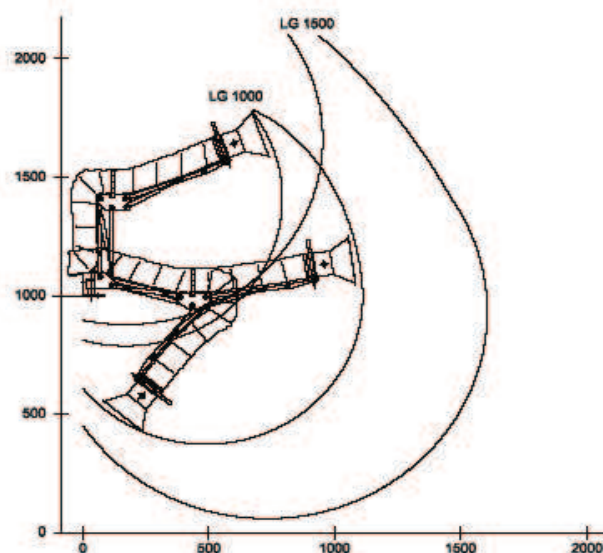


Type LG 1000 - 1500:

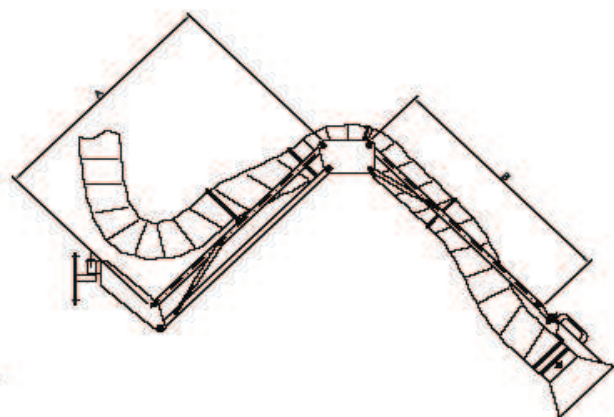


Type	A	Hose diameter
LG 1000	350	ø38-ø200mm
LG 1500	600	ø38-ø200mm

Range LG 1000 - 1500 (ø100mm):

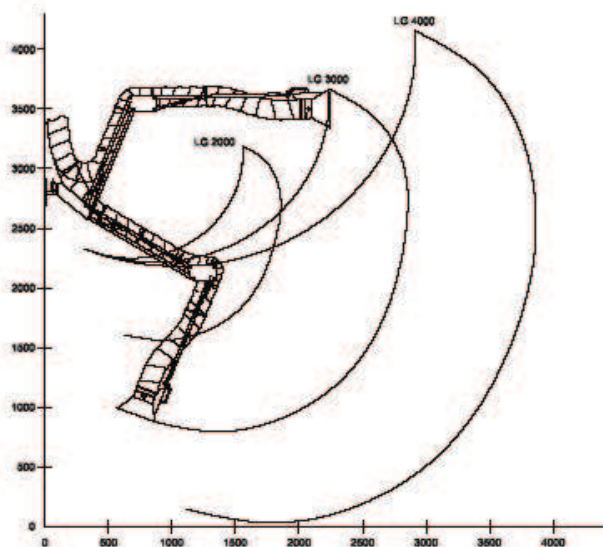


Type LG 2000 - 4000:



Type	A	B	Hose diameter
LG 2000	500	500	ø38-ø200mm
LG 3000	1000	1000	ø38-ø200mm
LG 4000	1500	1500	ø38-ø200mm

Range LG 2000 - 4000 (ø160mm):

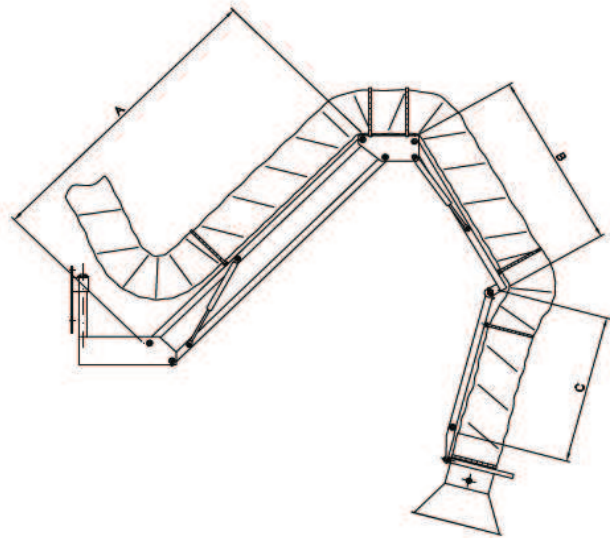


**Extraction arm
Punktabsaugarm**

type
Typ

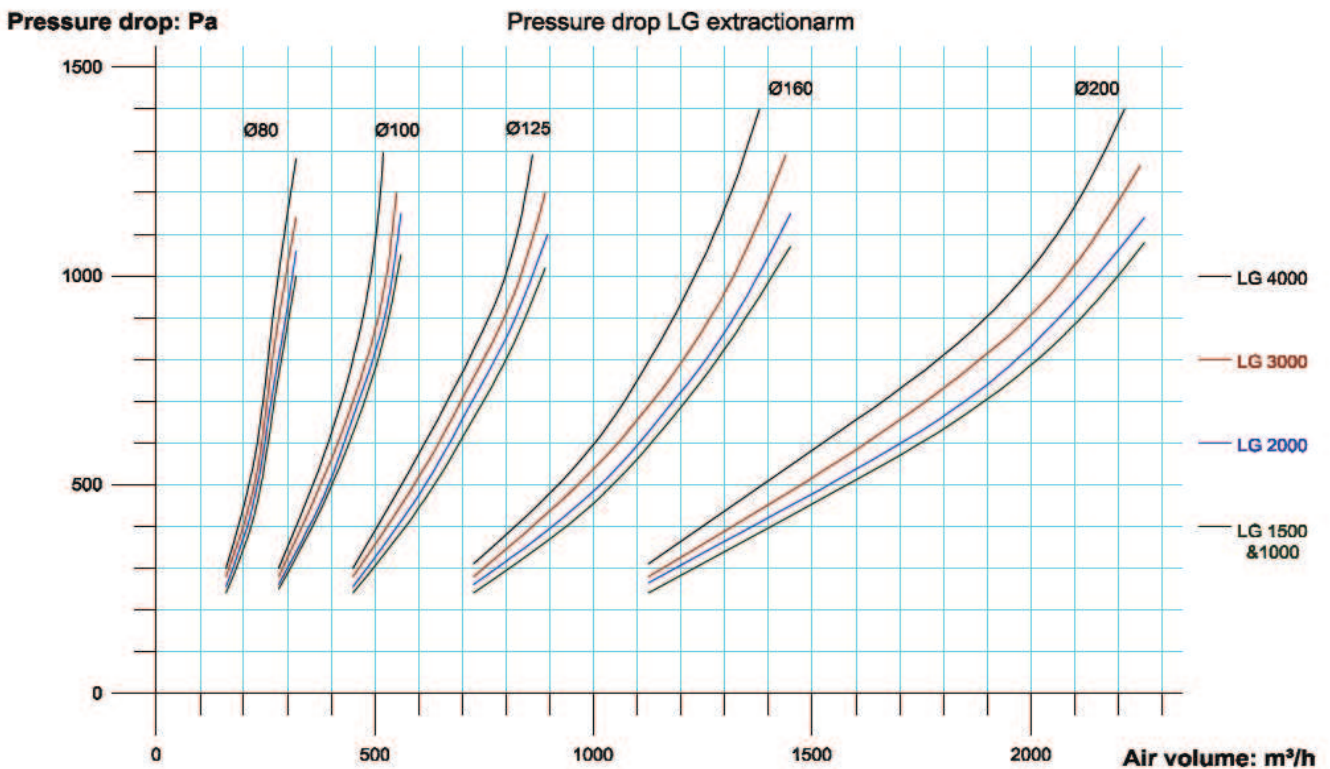
LG

Tripartite extraction arm type LG:



Type	A	B	C
LG 3000	1100	650	450
LG 4000	1600	800	800

Performance curve for LG 1000 - 4000 (ø80 - ø200mm):



Recht auf Änderungen bleibt vorbehalten. / Data is subject to alterations.
Rev. 05.08

Performance table for cantilever joints for LG (ø80 - ø200mm) as well as range:

Diameter	ø80mm	ø100mm	ø125mm	ø160mm	ø200mm
at m ³ /h	250	400	600	1000	1600
1m joint	50 Pa	50 Pa	60 Pa	60 Pa	60 Pa
2m joint	50 Pa	50 Pa	70 Pa	70 Pa	70 Pa
2m + 1m joint	100 Pa	100 Pa	150 Pa	150 Pa	150 Pa
2m + 2m joint	125 Pa	125 Pa	185 Pa	185 Pa	185 Pa
3m + 2m joint	145 Pa	145 Pa	220 Pa	220 Pa	220 Pa

Order no.	Cantilever joint	A	B
01 080 000	1m	1m	-
01 081 000	2m	2m	-
01 082 000	3m	2m	1m
01 083 000	4m	2m	2m
01 084 000	5m	3m	2m

